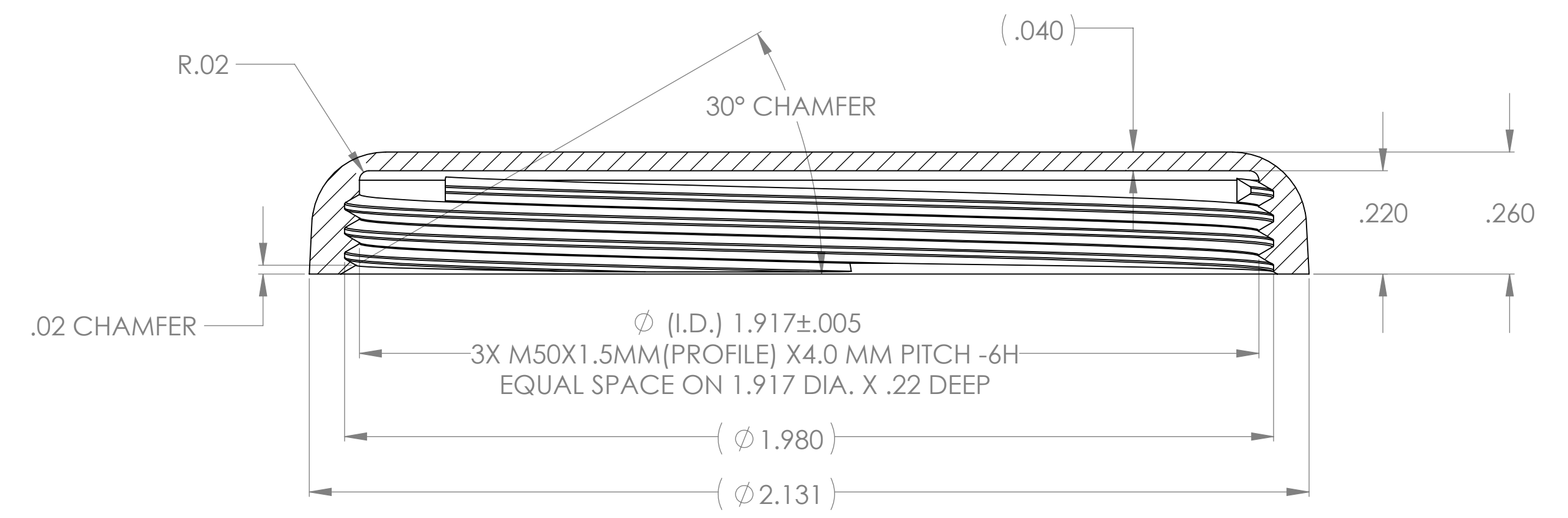
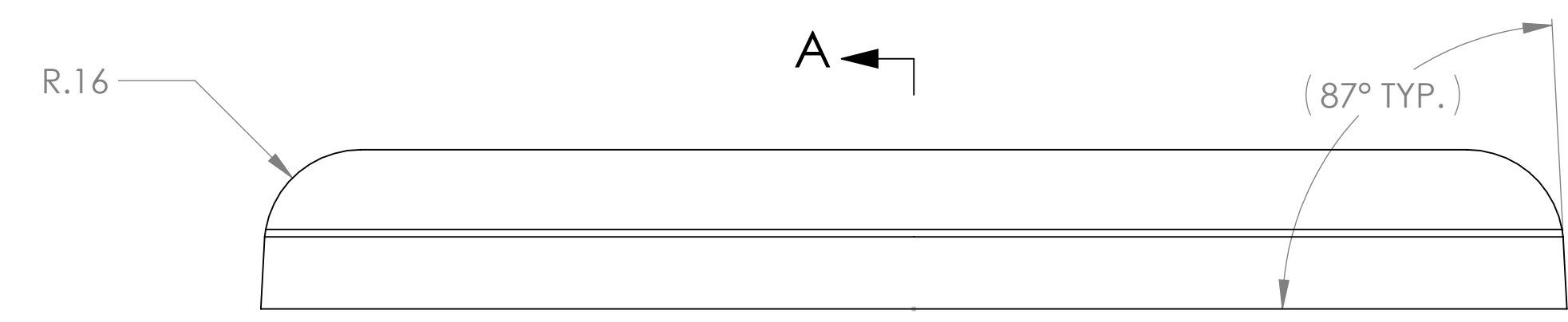
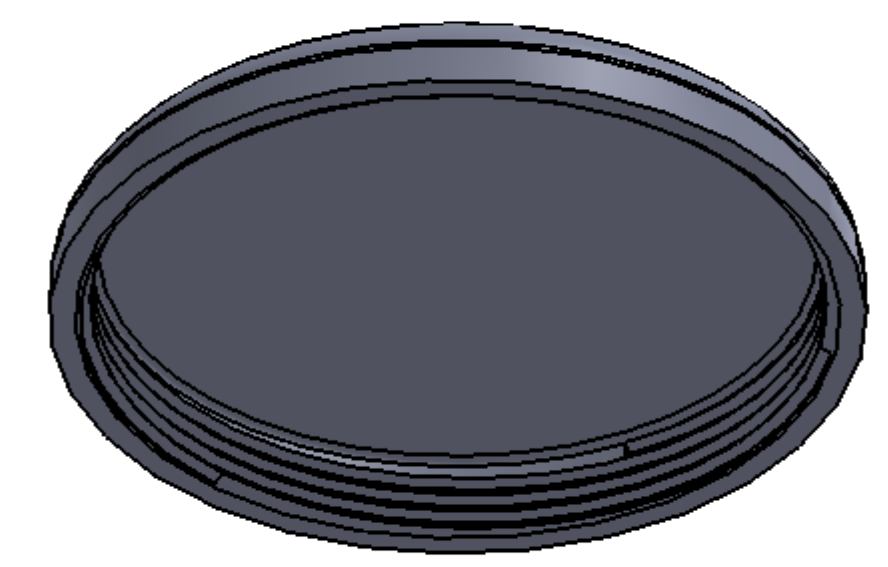


- NOTES: UNLESS OTHERWISE SPECIFIED
1. INTERPRET DIMENSIONING AND TOLERANCING PER ASME Y14.5M-2009.
 2. ALL UNSPECIFIED FILLETS SHALL BE R.010 MAX.
 3. DEBURR AND BREAK ALL SHARP EDGES .015 MAX.
 4. SURFACE ROUGHNESS 63 MICRONS OR BETTER.

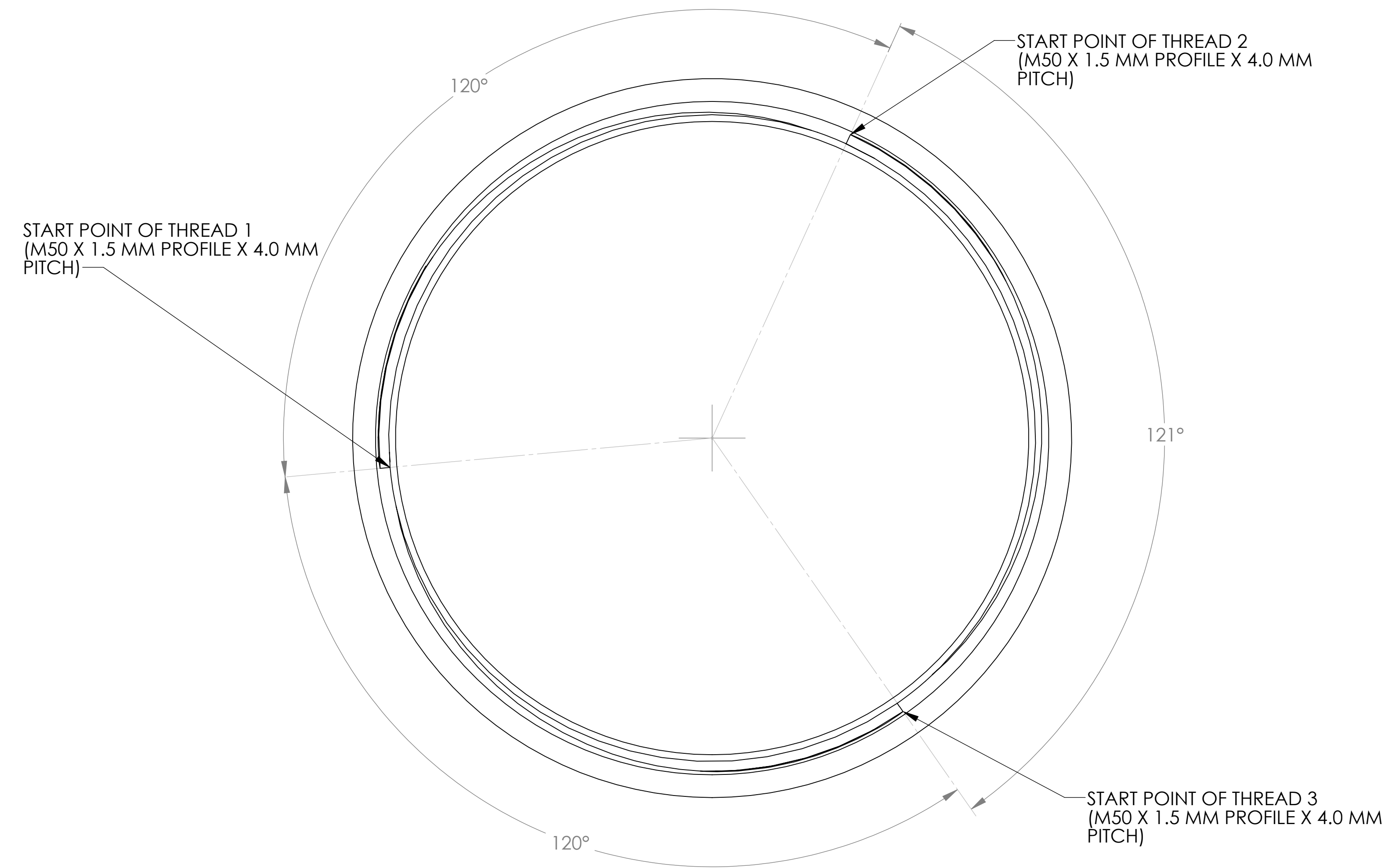
| ZONE | | REVISIONS | | DATE | APVD |
|------|--|-----------|--|------|------|
| LTR | DESCRIPTION | | | | |
| X1 | PROTOTYPE -ADD 3X M50 X1.5MM (PROFILE) X 4.0MM PITCH THREAD EQ SP ON 1.917 DIA. INTO CUSTOMER'S PART NUMBER # VIVE LOGO PLATE -INCREASE CAP'S OVER ALL THICKNESS FROM .219 TO .260 | TN | | 6/14 | CCB |



SECTION A-A



SCALE 2 : 1



PROPRIETARY NOTICE
 INFORMATION CONTAINED ON THIS DRAWING IS PROPRIETARY TO TTN MACHINING, INC. AND MAY NOT BE COPIED, REPRODUCED NOR PARTS MADE THERE FROM WITHOUT WRITTEN PERMISSION FROM TTN MACHINING, INC.



| THIRD ANGLE PROJECTION | | |
|---|--|---------------------|
| UNLESS OTHERWISE SPECIFIED DIMENSIONS ARE IN INCHES AND TOLERANCES ARE: | | |
| DECIMALS: | ANGLES: | SHEET METAL: |
| .X ±.03 | ± 1° | .XX ±.03 |
| .XX ±.01 | | .XXX ±.01 |
| .XXX ±.005 | | |
| THREAD FORM: | SURFACE ROUGHNESS: | |
| EXTERNAL-CLASS 2A | 125 OR BETTER | |
| INTERNAL-CLASS 2B | | |
| DRILL HOLE TOLERANCES: | SHEETMETAL SLOTTED & ROUND HOLES: | |
| .013 THRU .125 +.004/-0.001 | .016 THRU 1.000 ±.006 | |
| .126 THRU .250 +.005/-0.001 | | |
| .251 THRU .500 +.006/-0.001 | | |
| .501 THRU .750 +.008/-0.001 | | |
| .751 THRU 1.000 +.010/-0.001 | | |

| MATERIAL | |
|------------------|----------|
| N/A | |
| FINISH | N/A |
| DESIGN | XXXXXXXX |
| DRAFTER | TN 6/14 |
| CHECKER | XXXXXXXX |
| DO NOT SCALE DWG | |

| | | | |
|-------------------|---|--------------------|----|
| TITLE: | | VIVE_LOGO_PLATE 1A | |
| SIZE | D | REV | X1 |
| SCALE: 4:1 | | SHEET 1 OF 1 | |

CAD/CAM READY
 SOLIDWORKS DRAWING
 SOLIDWORKS DRAWING
 CLONED FROM:
 D1 Format: 5/10/13-TN